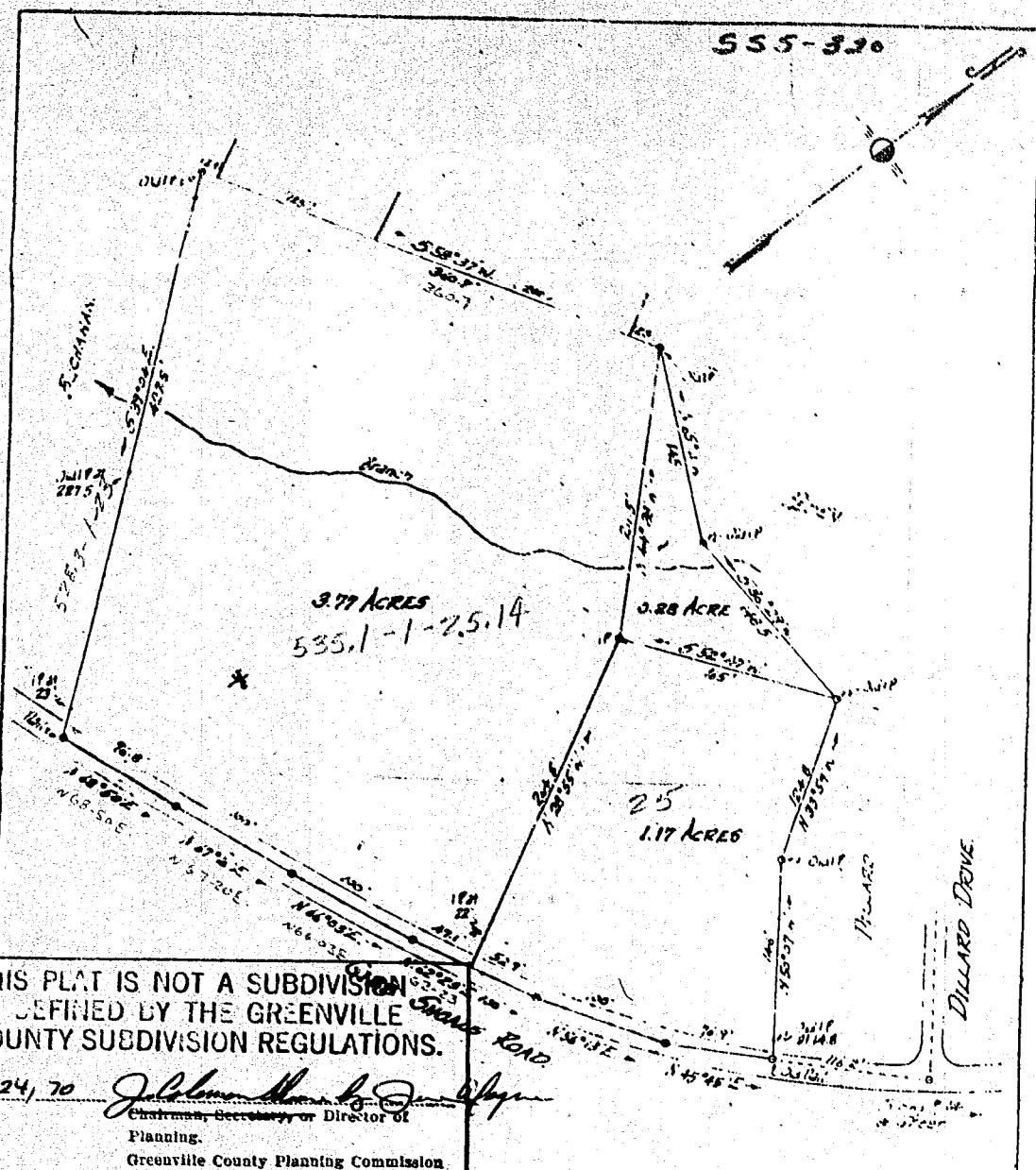


SSS-320



THIS PLAT IS NOT A SUBDIVISION  
 AS DEFINED BY THE GREENVILLE  
 COUNTY SUBDIVISION REGULATIONS.

7.24.70 *John A. Simmons*  
 Chairman, Secretary or Director of  
 Planning.  
 Greenville County Planning Commission.

PROPERTY OF  
**LILLIAN O. COOPER**

CHICK SPRINGS TOWNSHIP GREENVILLE COUNTY  
 SOUTH CAROLINA

SCALE: 1"=100 FEET. SEPT. 10 1969.  
 Survey made under 23 & 26 of 1967



1.00  
 SSS-320

John A. Simmons, Reg. Surveyor #2212  
 GLEEK, S.C. AUG 4 - 1970 2780  
 Recorded August 4, 1970 at 2:30 P. M., #2780.